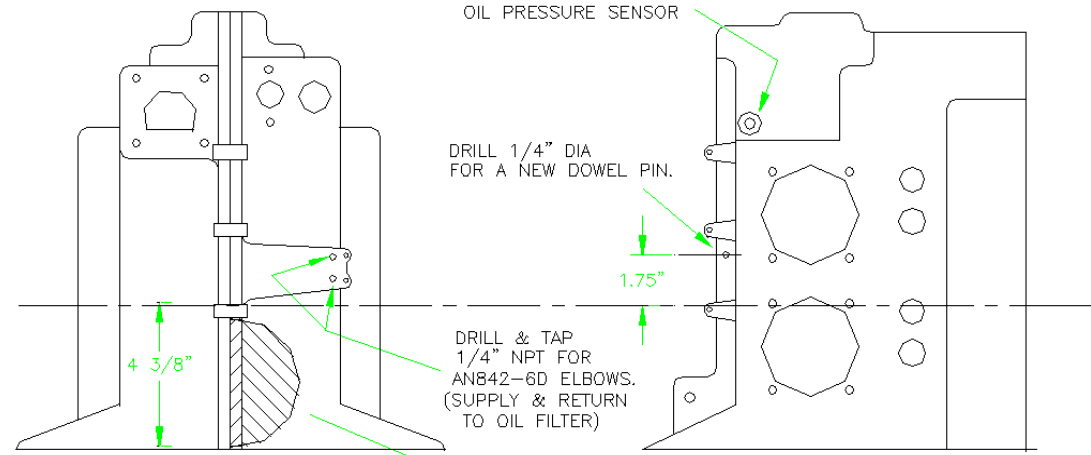
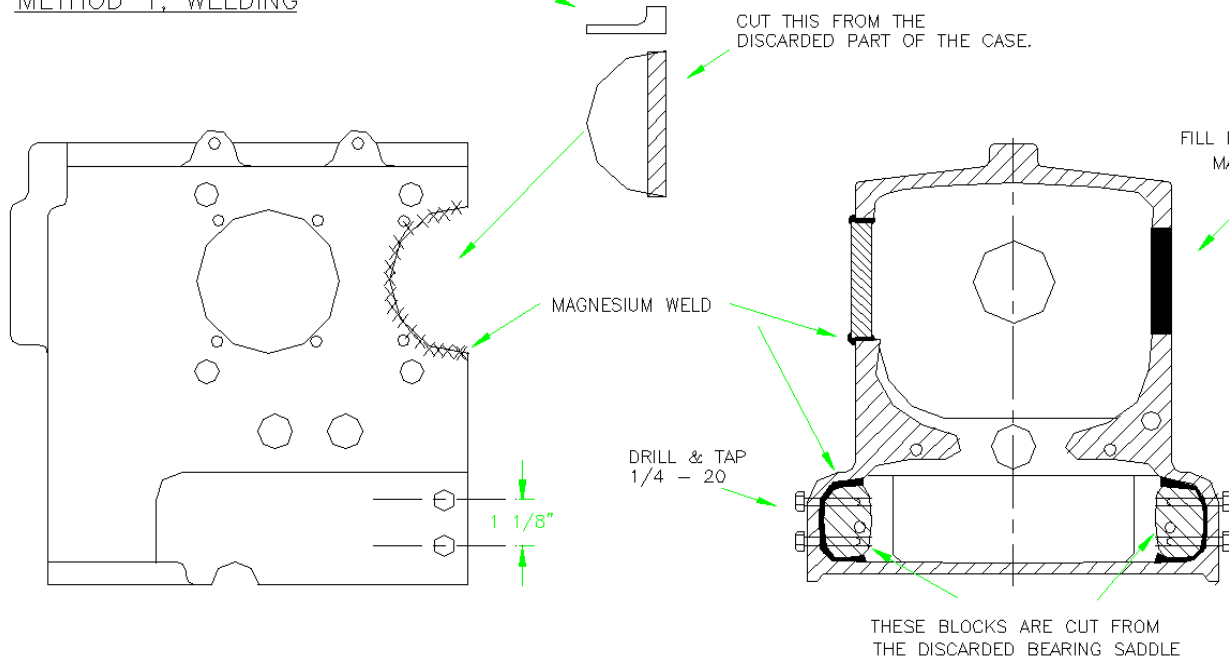


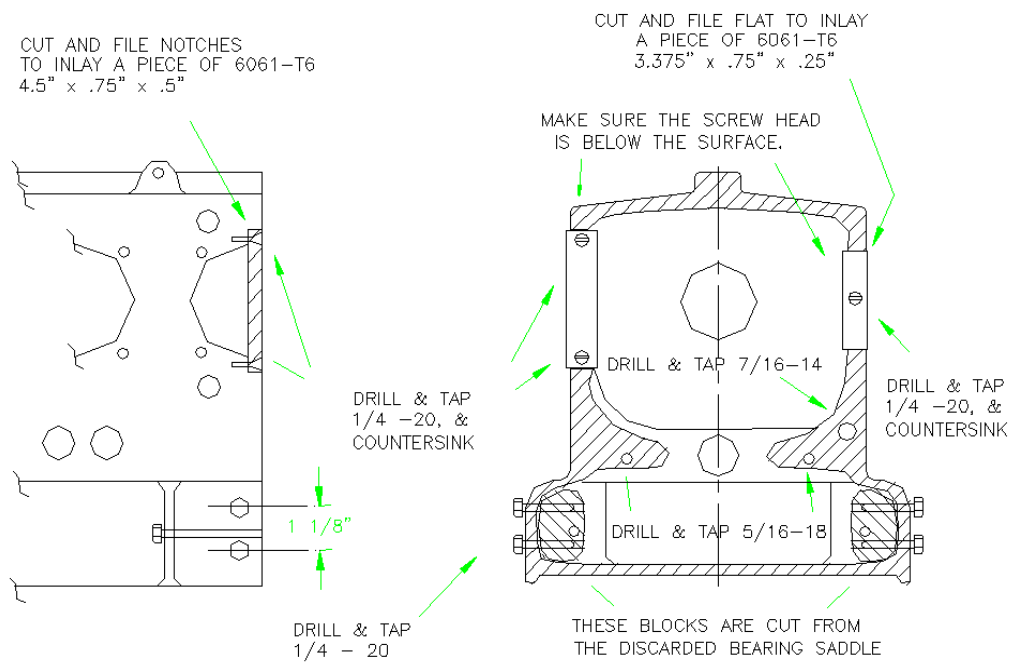
CUTTING THE CRANKCASE



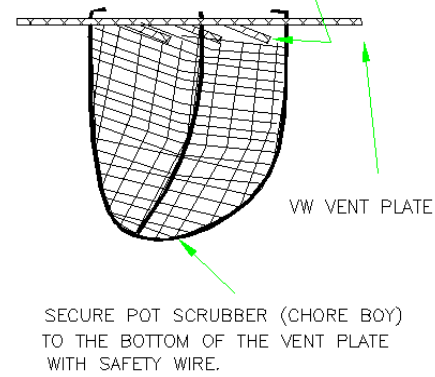
METHOD 1, WELDING



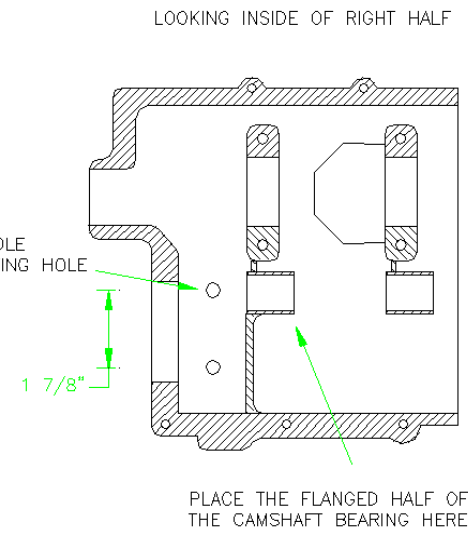
METHOD 2, NO WELDING



INSTALL THIS FIRST BEFORE THE CRANKCASE BREATHER. MAKE SURE THE SCOOPS OF THE VENT PLATE FACE DOWN AND TO THE THE OUTSIDE OF THE ENGINE.

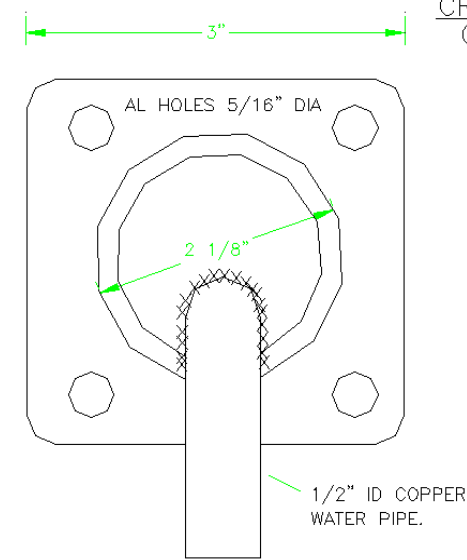


OIL PRESSURE RELIEF HOLE

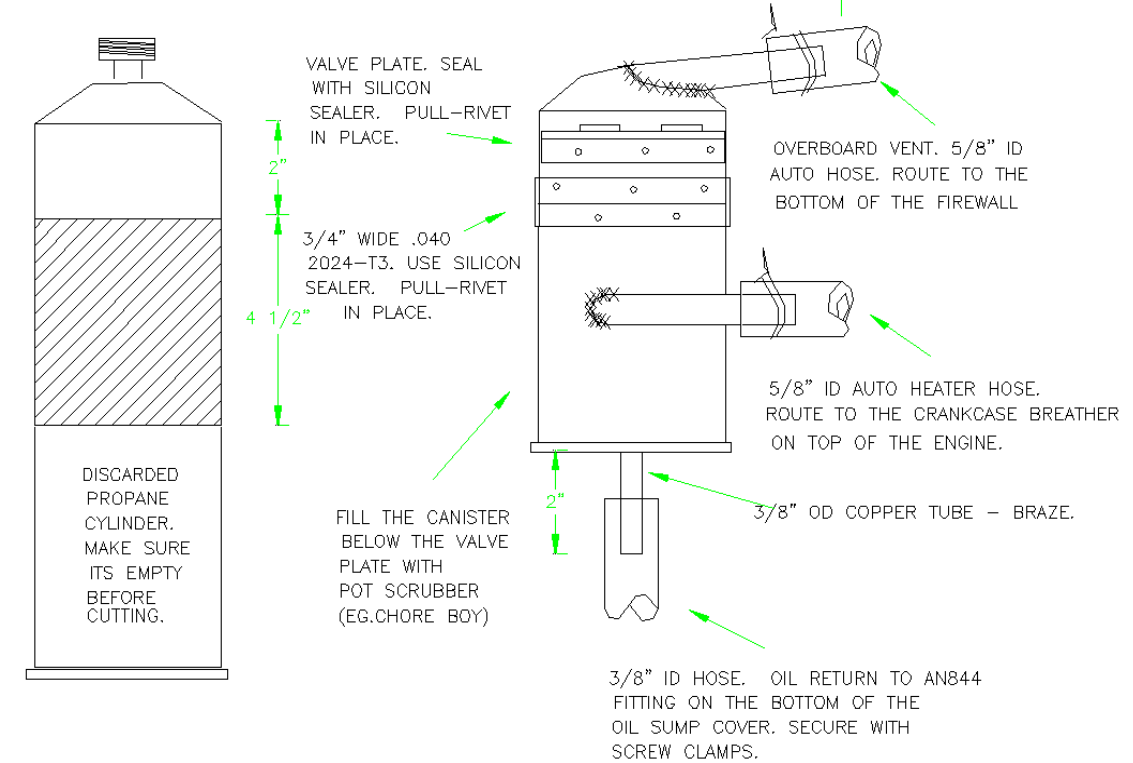


CRANKCASE BREATHER

(MOUNTS ON GENERATOR STAND)

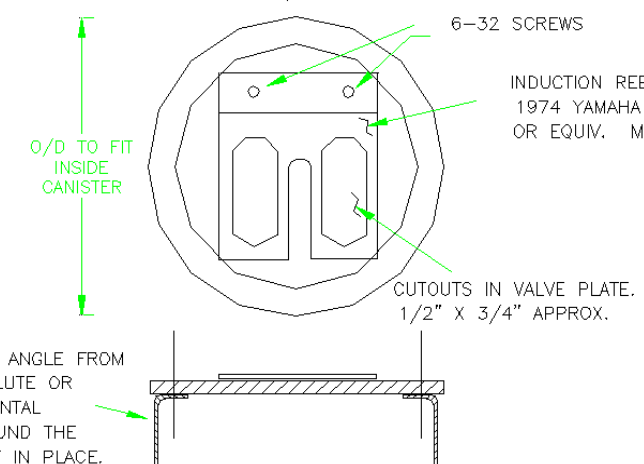


OIL SEPARATOR & ENGINE BREATHER



VALVE PLATE

MAKE FROM 1/8" 6061-T6



1/2 VW ENGINE

- CRANKCASE CONVERSION, 1

DRAWN BY: W. SPRING

REV. SEP 2002

SHEET 1